

## Test Report

No. CANEC2207551609

Date: 09 Jun 2022

Page 1 of 6

Client Name : GUANG DONG SQ UV CURING MATERIALS CO.,LTD,

Client Address : 8 DEHUA ROAD, INDUSTRIAL PARK, CHENGDONG NEIGHBORHOOD COMMITTEE, DECHENG STREET, DEQING COUNTY, GUANGDONG PROVINCE

Sample Name : Liquid Photo Imageable Solder Mask Material

Model No. : PSR-200

Client Ref. Info. : SEE REMARK

Colour : Green material

The above sample(s) and information were provided by the client.

### This report is to supersede test report CANEC2207551606

SGS Job No. : CP22-020429 - GZ

Date of Sample Received : 22 Apr 2022

Testing Period : 22 Apr 2022 - 28 Apr 2022

Test Requested : Selected test(s) as requested by the client.

Test Method(s) : Please refer to next page(s).

Test Result(s) : Please refer to next page(s).

Signed for and on behalf of  
SGS-CSTC Standards Technical Services Co., Ltd. Guangzhou Branch

Zmguan

Zm guan  
Approved Signatory

scan to see the report



6F2E1DB2



SGS-CSTC Standards Technical Services Co., Ltd.  
Guangzhou Branch Testing Center Chemical Laboratory.

Unless otherwise agreed in writing, this document is issued by the Company subject to its General Conditions of Service printed overleaf, available on request or accessible at <http://www.sgs.com/en/Terms-and-Conditions.aspx> and, for electronic format documents, subject to Terms and Conditions for Electronic Documents at <http://www.sgs.com/en/Terms-and-Conditions/Terms-e-Documents.aspx>. Attention is drawn to the limitation of liability, indemnification and jurisdiction issues defined therein. Any holder of this document is advised that information contained hereon reflects the Company's findings at the time of its intervention only and within the limits of Client's instructions, if any. The Company's sole responsibility is to its Client and this document does not exonerate parties to a transaction from exercising all their rights and obligations under the transaction documents. This document cannot be reproduced except in full, without prior written approval of the Company. Any unauthorized alteration, forgery or falsification of the content or appearance of this document is unlawful and offenders may be prosecuted to the fullest extent of the law. Unless otherwise stated the results shown in this test report refer only to the sample(s) tested.

Attention: To check the authenticity of testing / inspection report & certificate, please contact us at telephone: (86-755) 8307 1443, or email: [CN.Doccheck@sgs.com](mailto:CN.Doccheck@sgs.com)

198 Kazhu Road, Sciencetech Park Guangzhou Economic & Technology Development District, Guangzhou, China 510663

中国·广州·经济技术开发区科学城科珠路198号 邮编: 510663

t (86-20) 82155555 [www.sgs.com](http://www.sgs.com)

t (86-20) 82155555 [sgs.china@sgs.com](mailto:sgs.china@sgs.com)

## Test Report

No. CANEC2207551609

Date: 09 Jun 2022

Page 2 of 6

Test Result(s) :

Test Part Description :

Specimen No.	SGS Sample ID	Description
SN1	CAN22-075516.003	Green material

Remarks :

- (1) 1 mg/kg = 0.0001%
- (2) MDL = Method Detection Limit
- (3) ND = Not Detected ( < MDL )
- (4) "-" = Not Regulated

### Halogen

Test Method : With reference to EN 14582:2016, analysis was performed by IC.

<u>Test Item(s)</u>	<u>Unit</u>	<u>MDL</u>	<u>003</u>
Fluorine (F)	mg/kg	50	ND
Chlorine (Cl)	mg/kg	50	348
Bromine (Br)	mg/kg	50	ND
Iodine (I)	mg/kg	50	ND

This report updates Client Ref. Info..

Unless otherwise stated, the decision rule for conformity reporting is based on Binary Statement for Simple Acceptance Rule (  $w=0$  ) stated in ILAC-G8:09/2019.



Unless otherwise agreed in writing, this document is issued by the Company subject to its General Conditions of Service printed overleaf, available on request or accessible at <http://www.sgs.com/en/Terms-and-Conditions.aspx> and, for electronic format documents, subject to Terms and Conditions for Electronic Documents at <http://www.sgs.com/en/Terms-and-Conditions/Terms-e-Documents.aspx>. Attention is drawn to the limitation of liability, indemnification and jurisdiction issues defined therein. Any holder of this document is advised that information contained hereon reflects the Company's findings at the time of its intervention only and within the limits of Client's instructions, if any. The Company's sole responsibility is to its Client and this document does not exonerate parties to a transaction from exercising all their rights and obligations under the transaction documents. This document cannot be reproduced except in full, without prior written approval of the Company. Any unauthorized alteration, forgery or falsification of the content or appearance of this document is unlawful and offenders may be prosecuted to the fullest extent of the law. Unless otherwise stated the results shown in this test report refer only to the sample(s) tested.

Attention: To check the authenticity of testing / inspection report & certificate, please contact us at telephone: (86-755) 8307 1443, or email: [CN\\_Doccheck@sgs.com](mailto:CN_Doccheck@sgs.com)

REMARK:

G01N, G02N, G03N, G04N, G05N, G06N, G07N, G08N, G09N, G10N, G11N, G12N, G13N, G14N, G15N, G16N, G17N, G18N, G19N, G20, G21N, G22N, G23N, G24N, G25N, G26N, G27N, G28N, G29N, G30N, G31N, G32N, G33N, G34N, G35N, G36N, G37N, G38N, G39N, G40N, G41N, G42N, G43N, G44N, G45N, G46N, G47N, G48N, G49N, G50N, G51N, G52, G53N, G54N, G55N, G56N, G57N, G58N, G59N, G60N, G61N, G62N, G63N, G64N, G65N, G66N, G67N, G68N, G69N, G70N, G71N, G72N, G73N, G74N, G75N, G76N, G77N, G78N, G79N, G80N, G81N, G82N, G83N, G84N, G85N, G86N, G87N, G88N, G89N, G90N, G91N, G92N, G93N, G94N, G95N, G96N, G97N, G98N, G99N,

G01MN, G02MN, G03MN, G04MN, G05MN, G06MN, G07MN, G08MN, G09MN, G10MN, G11MN, G12MN, G13MN, G14MN, G15MN, G16MN, G17MN, G18MN, G19MN, G20MN, G21MN, G22MN, G23MN, G24MN, G25MN, G26MN, G27MN, G28MN, G29MN, G30MN, G31MN, G32MN, G33MN, G34MN, G35MN, G36MN, G37MN, G38MN, G39MN, G40MN, G41MN, G42MN, G43MN, G44MN, G45MN, G46MN, G47MN, G48MN, G49MN, G50MN, G51MN, G52MN, G53MN, G54MN, G55MN, G56MN, G57MN, G58MN, G59MN, G60MN, G61MN, G62MN, G63MN, G64MN, G65MN, G66MN, G67MN, G68MN, G69MN, G70MN, G71MN, G72MN, G73MN, G74MN, G75MN, G76MN, G77MN, G78MN, G79MN, G80MN, G81MN, G82MN, G83MN, G84MN, G85MN, G86MN, G87MN, G88MN, G89MN, G90MN, G91MN, G92MN, G93MN, G94MN, G95MN, G96MN, G97MN, G98MN, G99MN,

SG01N, SG02N, SG03N, SG04N, SG05N, SG06N, SG07N, SG08N, SG09N, SG10N, SG11N, SG12N, SG13N, SG14N, SG15N, SG16N, SG17N, SG18N, SG19N, SG20N, SG21N, SG22N, SG23N, SG24N, SG25N, SG26N, SG27N, SG28N, SG29N, SG30N, SG31N, SG32N, SG33N, SG34N, SG35N, SG36N, SG37N, SG38N, SG39N, SG40N, SG41N, SG42N, SG43N, SG44N, SG45N, SG46N, SG47N, SG48N, SG49N, SG50N, SG51N, SG52N, SG53N, SG54N, SG55N, SG56N, SG57N, SG58N, SG59N, SG60N, SG61N, SG62N, SG63N, SG64N, SG65N, SG66N, SG67N, SG68N, SG69N, SG70N, SG71N, SG72N, SG73N, SG74N, SG75N, SG76N, SG77N, SG78N, SG79N, SG80N, SG81N, SG82N, SG83N, SG84N, SG85N, SG86N, SG87N, SG88N, SG89N, SG90N, SG91N, SG92N, SG93N, SG94N, SG95N, SG96N, SG97N, SG98N, SG99N,

BK01N, BK02N, BK03N, BK04N, BK05N, BK06N, BK07N, BK08N, BK09N, BK10N, BK11N, BK12N, BK13N, BK14N, BK15N, BK16N, BK17N, BK18N, BK19N, BK20N, BK21N, BK22N, BK23N, BK24N, BK25N, BK26N, BK27N, BK28N, BK29N, BK30N,

BK01MN, BK02MN, BK03MN, BK04MN, BK05MN, BK06MN, BK07MN, BK08MN, BK09MN, BK10MN, BK11MN, BK12MN, BK13MN, BK14MN, BK15MN, BK16MN, BK17MN, BK18MN, BK19MN, BK20MN, BK21MN, BK22MN, BK23MN, BK24MN, BK25MN, BK26MN, BK27MN, BK28MN, BK29MN, BK30MN,

SBK01N, SBK02N, SBK03N, SBK04N, SBK05N, SBK06N, SBK07N, SBK08N, SBK09N, SBK10N, SBK11N, SBK12N, SBK13N, SBK14N, SBK15N, SBK16N, SBK17N, SBK18N, SBK19N, SBK20N, SBK21N, SBK22N, SBK23N, SBK24N, SBK25N, SBK26N, SBK27N, SBK28N, SBK29N, SBK30N,

Y01N, Y02N, Y03N, Y04N, Y05N, Y01MN, Y02MN, Y03MN, SY11N, SY12N, SY13N, SY14N, SY15N, SY11MN, SY12MN, SY13MN,

BL01N, BL02N, BL03N, BL04N, BL05N, BL01MN, BL02MN, BL03MN, SBL11N, SBL12N, SBL13N, SBL14N, SBL15N, SBL11MN, SBL12MN, SBL13MN,

R01N, R02N, R03N, R04N, R05N, R01MN, R02MN, R03MN, SR11N, SR12N, SR13N, SR14N, SR15N, SR11MN, SR12MN, SR13MN,

V11N, V12N, V13N, V14N, V15N, V16N, V17N, V18N, V19N

BK01, BK02, BK03, BK04, BK05, BK06,

BL01, BL02, BL03, BL04, BL05, BL06,



Unless otherwise agreed in writing, this document is issued by the Company subject to its General Conditions of Service printed overleaf, available on request or accessible at <http://www.sgs.com/en/Terms-and-Conditions.aspx> and, for electronic format documents, subject to Terms and Conditions for Electronic Documents at <http://www.sgs.com/en/Terms-and-Conditions/Terms-e-Documents.aspx>. Attention is drawn to the limitation of liability, indemnification and jurisdiction issues defined therein. Any holder of this document is advised that information contained hereon reflects the Company's findings at the time of its intervention only and within the limits of Client's instructions, if any. The Company's sole responsibility is to its Client and this document does not exonerate parties to a transaction from exercising all their rights and obligations under the transaction documents. This document cannot be reproduced except in full, without prior written approval of the Company. Any unauthorized alteration, forgery or falsification of the content or appearance of this document is unlawful and offenders may be prosecuted to the fullest extent of the law. Unless otherwise stated the results shown in this test report refer only to the sample(s) tested.

Attention: To check the authenticity of testing / inspection report & certificate, please contact us at telephone: (86-755) 8307 1443, or email: [CN.Doccheck@sgs.com](mailto:CN.Doccheck@sgs.com)

R01, R02, R03, R04, R05

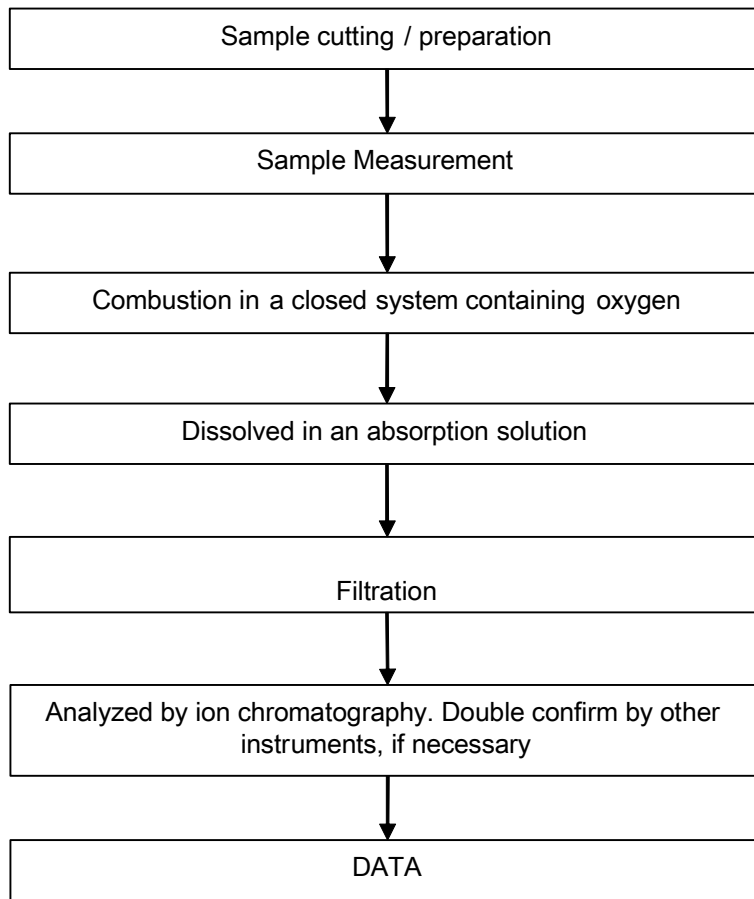


Unless otherwise agreed in writing, this document is issued by the Company subject to its General Conditions of Service printed overleaf, available on request or accessible at <http://www.sgs.com/en/Terms-and-Conditions.aspx> and, for electronic format documents, subject to Terms and Conditions for Electronic Documents at <http://www.sgs.com/en/Terms-and-Conditions/Terms-e-Documents.aspx>. Attention is drawn to the limitation of liability, indemnification and jurisdiction issues defined therein. Any holder of this document is advised that information contained hereon reflects the Company's findings at the time of its intervention only and within the limits of Client's instructions, if any. The Company's sole responsibility is to its Client and this document does not exonerate parties to a transaction from exercising all their rights and obligations under the transaction documents. This document cannot be reproduced except in full, without prior written approval of the Company. Any unauthorized alteration, forgery or falsification of the content or appearance of this document is unlawful and offenders may be prosecuted to the fullest extent of the law. Unless otherwise stated the results shown in this test report refer only to the sample(s) tested.

**Attention: To check the authenticity of testing / inspection report & certificate, please contact us at telephone: (86-755) 8307 1443, or email: [CN.Doccheck@sgs.com](mailto:CN.Doccheck@sgs.com)**

ATTACHMENTS

Halogen Testing Flow Chart



Unless otherwise agreed in writing, this document is issued by the Company subject to its General Conditions of Service printed overleaf, available on request or accessible at <http://www.sgs.com/en/Terms-and-Conditions.aspx> and, for electronic format documents, subject to Terms and Conditions for Electronic Documents at <http://www.sgs.com/en/Terms-and-Conditions/Terms-e-Documents.aspx>. Attention is drawn to the limitation of liability, indemnification and jurisdiction issues defined therein. Any holder of this document is advised that information contained hereon reflects the Company's findings at the time of its intervention only and within the limits of Client's instructions, if any. The Company's sole responsibility is to its Client and this document does not exonerate parties to a transaction from exercising all their rights and obligations under the transaction documents. This document cannot be reproduced except in full, without prior written approval of the Company. Any unauthorized alteration, forgery or falsification of the content or appearance of this document is unlawful and offenders may be prosecuted to the fullest extent of the law. Unless otherwise stated the results shown in this test report refer only to the sample(s) tested.

Attention: To check the authenticity of testing / inspection report & certificate, please contact us at telephone: (86-755) 8307 1443, or email: [CN.Doccheck@sgs.com](mailto:CN.Doccheck@sgs.com)

Sample photo:



SGS authenticate the photo on original report only

\*\*\* End of Report \*\*\*

