

Test Report

No. CANEC2207557804

Date: 09 Jun 2022

Page 1 of 8

Client Name : GUANG DONG SQ UV CURING MATERIALS CO.,LTD,

Client Address : 8 DEHUA ROAD, INDUSTRIAL PARK, CHENGDONG NEIGHBORHOOD COMMITTEE, DECHENG STREET, DEQING COUNTY, GUANGDONG PROVINCE

Sample Name : Liquid Photo Imageable Solder Mask Material

Model No. : PSR-200

Client Ref. Info. : SEE REMARK

Colour : Green material

The above sample(s) and information were provided by the client.

This report is to supersede test report CANEC2207557801

SGS Job No. : CP22-020429 - GZ

Date of Sample Received : 22 Apr 2022

Testing Period : 22 Apr 2022 - 06 May 2022

Test Requested : Selected test(s) as requested by the client.

Test Method(s) : Please refer to next page(s).

Test Result(s) : Please refer to next page(s).

Conclusion : Based on the performed tests on submitted sample(s), the results of Lead, Mercury, Cadmium, Hexavalent chromium, Polybrominated biphenyls (PBBs), Polybrominated diphenyl ethers (PBDEs) and Phthalates such as Bis(2-ethylhexyl) phthalate (DEHP), Butyl benzyl phthalate (BBP), Dibutyl phthalate (DBP), and Diisobutyl phthalate (DIBP) comply with the limits as set by RoHS Directive (EU) 2015/863 amending Annex II to Directive 2011/65/EU.

Signed for and on behalf of
SGS-CSTC Standards Technical Services Co., Ltd. Guangzhou Branch

Zmguan

Zm guan
Approved Signatory

scan to see the report



6338B72F



SGS-CSTC Standards Technical Services Co., Ltd.
Guangzhou Branch Testing Center Chemical Laboratory.

Unless otherwise agreed in writing, this document is issued by the Company subject to its General Conditions of Service printed overleaf, available on request or accessible at <http://www.sgs.com/en/Terms-and-Conditions.aspx> and, for electronic format documents, subject to Terms and Conditions for Electronic Documents at <http://www.sgs.com/en/Terms-and-Conditions/Terms-e-Documents.aspx>. Attention is drawn to the limitation of liability, indemnification and jurisdiction issues defined therein. Any holder of this document is advised that information contained hereon reflects the Company's findings at the time of its intervention only and within the limits of Client's instructions, if any. The Company's sole responsibility is to its Client and this document does not exonerate parties to a transaction from exercising all their rights and obligations under the transaction documents. This document cannot be reproduced except in full, without prior written approval of the Company. Any unauthorized alteration, forgery or falsification of the content or appearance of this document is unlawful and offenders may be prosecuted to the fullest extent of the law. Unless otherwise stated the results shown in this test report refer only to the sample(s) tested.

Attention: To check the authenticity of testing / inspection report & certificate, please contact us at telephone: (86-755) 8307 1443, or email: CN.Doccheck@sgs.com

198 Kazhu Road, Sciencetech Park Guangzhou Economic & Technology Development District, Guangzhou, China 510663

中国·广州·经济技术开发区科学城科珠路198号 邮编: 510663

t (86-20) 82155555 www.sgs.com

t (86-20) 82155555 sgs.china@sgs.com

Test Result(s) :

Test Part Description :

| Specimen No. | SGS Sample ID | Description |
|--------------|------------------|----------------|
| SN1 | CAN22-075578.001 | Green material |

Remarks :

- (1) 1 mg/kg = 0.0001%
- (2) MDL = Method Detection Limit
- (3) ND = Not Detected (< MDL)
- (4) "-" = Not Regulated

RoHS Directive (EU) 2015/863 amending Annex II to Directive 2011/65/EU

Test Method : With reference to IEC 62321-4:2013+A1:2017, IEC 62321-5:2013, IEC 62321-7-2:2017 , IEC 62321-6:2015 and IEC 62321-8:2017, analyzed by ICP-OES , UV-Vis and GC-MS .

| <u>Test Item(s)</u> | <u>Limit</u> | <u>Unit</u> | <u>MDL</u> | <u>001</u> |
|----------------------------|--------------|-------------|------------|------------|
| Cadmium (Cd) | 100 | mg/kg | 2 | ND |
| Lead (Pb) | 1,000 | mg/kg | 2 | ND |
| Mercury (Hg) | 1,000 | mg/kg | 2 | ND |
| Hexavalent Chromium (CrVI) | 1,000 | mg/kg | 8 | ND |
| Sum of PBBs | 1,000 | mg/kg | - | ND |
| Monobromobiphenyl | - | mg/kg | 5 | ND |
| Dibromobiphenyl | - | mg/kg | 5 | ND |
| Tribromobiphenyl | - | mg/kg | 5 | ND |
| Tetrabromobiphenyl | - | mg/kg | 5 | ND |
| Pentabromobiphenyl | - | mg/kg | 5 | ND |
| Hexabromobiphenyl | - | mg/kg | 5 | ND |
| Heptabromobiphenyl | - | mg/kg | 5 | ND |
| Octabromobiphenyl | - | mg/kg | 5 | ND |
| Nonabromobiphenyl | - | mg/kg | 5 | ND |
| Decabromobiphenyl | - | mg/kg | 5 | ND |
| Sum of PBDEs | 1,000 | mg/kg | - | ND |
| Monobromodiphenyl ether | - | mg/kg | 5 | ND |
| Dibromodiphenyl ether | - | mg/kg | 5 | ND |
| Tribromodiphenyl ether | - | mg/kg | 5 | ND |
| Tetrabromodiphenyl ether | - | mg/kg | 5 | ND |
| Pentabromodiphenyl ether | - | mg/kg | 5 | ND |



Unless otherwise agreed in writing, this document is issued by the Company subject to its General Conditions of Service printed overleaf, available on request or accessible at <http://www.sgs.com/en/Terms-and-Conditions.aspx> and, for electronic format documents, subject to Terms and Conditions for Electronic Documents at <http://www.sgs.com/en/Terms-and-Conditions/Terms-e-Documents.aspx>. Attention is drawn to the limitation of liability, indemnification and jurisdiction issues defined therein. Any holder of this document is advised that information contained hereon reflects the Company's findings at the time of its intervention only and within the limits of Client's instructions, if any. The Company's sole responsibility is to its Client and this document does not exonerate parties to a transaction from exercising all their rights and obligations under the transaction documents. This document cannot be reproduced except in full, without prior written approval of the Company. Any unauthorized alteration, forgery or falsification of the content or appearance of this document is unlawful and offenders may be prosecuted to the fullest extent of the law. Unless otherwise stated the results shown in this test report refer only to the sample(s) tested.

Attention: To check the authenticity of testing / inspection report & certificate, please contact us at telephone: (86-755) 8307 1443, or email: CN_Doccheck@sgs.com

Test Report

No. CANEC2207557804

Date: 09 Jun 2022

Page 3 of 8

| <u>Test Item(s)</u> | <u>Limit</u> | <u>Unit</u> | <u>MDL</u> | <u>001</u> |
|-------------------------------------|--------------|-------------|------------|------------|
| Hexabromodiphenyl ether | - | mg/kg | 5 | ND |
| Heptabromodiphenyl ether | - | mg/kg | 5 | ND |
| Octabromodiphenyl ether | - | mg/kg | 5 | ND |
| Nonabromodiphenyl ether | - | mg/kg | 5 | ND |
| Decabromodiphenyl ether | - | mg/kg | 5 | ND |
| Dibutyl phthalate (DBP) | 1,000 | mg/kg | 50 | ND |
| Butyl benzyl phthalate (BBP) | 1,000 | mg/kg | 50 | ND |
| Bis (2-ethylhexyl) phthalate (DEHP) | 1,000 | mg/kg | 50 | ND |
| Diisobutyl Phthalates (DIBP) | 1,000 | mg/kg | 50 | ND |

Notes :

- (1) The maximum permissible limit is quoted from RoHS Directive (EU) 2015/863.
- (2) IEC 62321 series is equivalent to EN 62321 series
https://www.cenelec.eu/dyn/www/f?p=104:30:1742232870351101:::FSP_ORG_ID,FSP_LANG_ID:1258637,25
- (3) The restriction of DEHP, BBP, DBP and DIBP shall apply to medical devices, including in vitro medical devices, and monitoring and control instruments, including industrial monitoring and control instruments, from 22 July 2021.

This report updates Client Ref. Info..

Unless otherwise stated, the decision rule for conformity reporting is based on Binary Statement for Simple Acceptance Rule ($w=0$) stated in ILAC-G8:09/2019.



Unless otherwise agreed in writing, this document is issued by the Company subject to its General Conditions of Service printed overleaf, available on request or accessible at <http://www.sgs.com/en/Terms-and-Conditions.aspx> and, for electronic format documents, subject to Terms and Conditions for Electronic Documents at <http://www.sgs.com/en/Terms-and-Conditions/Terms-e-Documents.aspx>. Attention is drawn to the limitation of liability, indemnification and jurisdiction issues defined therein. Any holder of this document is advised that information contained hereon reflects the Company's findings at the time of its intervention only and within the limits of Client's instructions, if any. The Company's sole responsibility is to its Client and this document does not exonerate parties to a transaction from exercising all their rights and obligations under the transaction documents. This document cannot be reproduced except in full, without prior written approval of the Company. Any unauthorized alteration, forgery or falsification of the content or appearance of this document is unlawful and offenders may be prosecuted to the fullest extent of the law. Unless otherwise stated the results shown in this test report refer only to the sample(s) tested.

Attention: To check the authenticity of testing / inspection report & certificate, please contact us at telephone: (86-755) 8307 1443, or email: CN_Doccheck@sgs.com

REMARK:

G01, G02, G03, G04, G05, G06, G07, G08, G09, G10, G11, G12, G13, G14, G15, G16, G17, G18, G19, G20, G21, G22, G23, G24, G25, G26, G27, G28, G29, G30, G31, G32, G33, G34, G35, G36, G37, G38, G39, G40, G41, G42, G43, G44, G45, G46, G47, G48, G49, G50, G51, G52, G53, G54, G55, G56, G57, G58, G59, G60, G61, G62, G63, G64, G65, G66, G67, G68, G69, G70, G71, G72, G73, G74, G75, G76, G77, G78, G79, G80, G81, G82, G83, G84, G85, G86, G87, G88, G89, G90, G91, G92, G93, G94, G95, G96, G97, G98, G99, G01N, G02N, G03N, G04N, G05N, G06N, G07N, G08N, G09N, G10N, G11N, G12N, G13N, G14N, G15N, G16N, G17N, G18N, G19N, G20, G21N, G22N, G23N, G24N, G25N, G26N, G27N, G28N, G29N, G30N, G31N, G32N, G33N, G34N, G35N, G36N, G37N, G38N, G39N, G40N, G41N, G42N, G43N, G44N, G45N, G46N, G47N, G48N, G49N, G50N, G51N, G52, G53N, G54N, G55N, G56N, G57N, G58N, G59N, G60N, G61N, G62N, G63N, G64N, G65N, G66N, G67N, G68N, G69N, G70N, G71N, G72N, G73N, G74N, G75N, G76N, G77N, G78N, G79N, G80N, G81N, G82N, G83N, G84N, G85N, G86N, G87N, G88N, G89N, G90N, G91N, G92N, G93N, G94N, G95N, G96N, G97N, G98N, G99N, G01M, G02M, G03M, G21M, G22M, G23M, G41M, G42M, G43M, G44M, G44M, G45M, G46M, G47M, G48M, G49M, G50M, G51M, G52M, G53M, G54M, G55M, G56M, G57M, G58M, G59M, G60M, G61M, G62M, G63M, G64M, G65M, G66M, G67M, G68M, G69M, G70M, G71M, G72M, G73M, G74M, G75M, G76M, G77M, G78M, G79M, G80M, G81M, G82M, G83M, G84M, G85M, G86M, G87M, G88M, G89M, G90M, G91M, G92M, G93M, G94M, G95M, G96M, G97M, G98M, G99M, G01MN, G02MN, G03MN, G04MN, G05MN, G06MN, G07MN, G08MN, G09MN, G10MN, G11MN, G12MN, G13MN, G14MN, G15MN, G16MN, G17MN, G18MN, G19MN, G20MN, G21MN, G22MN, G23MN, G24MN, G25MN, G26MN, G27MN, G28MN, G29MN, G30MN, G31MN, G32MN, G33MN, G34MN, G35MN, G36MN, G37MN, G38MN, G39MN, G40MN, G41MN, G42MN, G43MN, G44MN, G45MN, G46MN, G47MN, G48MN, G49MN, G50MN, G51MN, G52MN, G53MN, G54MN, G55MN, G56MN, G57MN, G58MN, G59MN, G60MN, G61MN, G62MN, G63MN, G64MN, G65MN, G66MN, G67MN, G68MN, G69MN, G70MN, G71MN, G72MN, G73MN, G74MN, G75MN, G76MN, G77MN, G78MN, G79MN, G80MN, G81MN, G82MN, G83MN, G84MN, G85MN, G86MN, G87MN, G88MN, G89MN, G90MN, G91MN, G92MN, G93MN, G94MN, G95MN, G96MN, G97MN, G98MN, G99MN, SG01, SG02, SG03, SG04, SG05, SG06, SG07, SG08, SG09, SG10, SG11, SG12, SG13, SG14, SG15, SG16, SG17, SG18, SG19, SG20, SG21, SG22, SG23, SG24, SG25, SG26, SG27, SG28, SG29, SG30, SG31, SG32, SG33, SG34, SG35, SG36, SG37, SG38, SG39, SG40, SG41, SG42, SG43, SG44, SG45, SG46, SG47, SG48, SG49, SG50, SG51, SG52, SG53, SG54, SG55, SG56, SG57, SG58, SG59, SG60, SG61, SG62, SG63, SG64, SG65, SG66, SG67, SG68, SG69, SG70, SG71, SG72, SG73, SG74, SG75, SG76, SG77, SG78, SG79, SG80, SG81, SG82, SG83, SG84, SG85, SG86, SG87, SG88, SG89, SG90, SG91, SG92, SG93, SG94, SG95, SG96, SG97, SG98, SG99, SG01N, SG02N, SG03N, SG04N, SG05N, SG06N, SG07N, SG08N, SG09N, SG10N, SG11N, SG12N, SG13N, SG14N, SG15N, SG16N, SG17N, SG18N, SG19N, SG20N, SG21N, SG22N, SG23N, SG24N, SG25N, SG26N, SG27N, SG28N, SG29N, SG30N, SG31N, SG32N, SG33N, SG34N, SG35N, SG36N, SG37N, SG38N, SG39N, SG40N, SG41N, SG42N, SG43N, SG44N, SG45N, SG46N, SG47N, SG48N, SG49N, SG50N, SG51N, SG52N, SG53N, SG54N, SG55N, SG56N, SG57N, SG58N, SG59N, SG60N, SG61N, SG62N, SG63N, SG64N, SG65N, SG66N, SG67N, SG68N, SG69N, SG70N, SG71N, SG72N, SG73N, SG74N, SG75N, SG76N, SG77N, SG78N, SG79N, SG80N, SG81N, SG82N, SG83N, SG84N, SG85N, SG86N, SG87N, SG88N, SG89N, SG90N, SG91N, SG92N, SG93N, SG94N, SG95N, SG96N, SG97N, SG98N, SG99N, BK01, BK02, BK03, BK04, BK05, BK06, BK07, BK08, BK09, BK10, BK11, BK12, BK13, BK14, BK15, BK16, BK17,



Unless otherwise agreed in writing, this document is issued by the Company subject to its General Conditions of Service printed overleaf, available on request or accessible at <http://www.sgs.com/en/Terms-and-Conditions.aspx> and, for electronic format documents, subject to Terms and Conditions for Electronic Documents at <http://www.sgs.com/en/Terms-and-Conditions/Terms-e-Documents.aspx>. Attention is drawn to the limitation of liability, indemnification and jurisdiction issues defined therein. Any holder of this document is advised that information contained hereon reflects the Company's findings at the time of its intervention only and within the limits of Client's instructions, if any. The Company's sole responsibility is to its Client and this document does not exonerate parties to a transaction from exercising all their rights and obligations under the transaction documents. This document cannot be reproduced except in full, without prior written approval of the Company. Any unauthorized alteration, forgery or falsification of the content or appearance of this document is unlawful and offenders may be prosecuted to the fullest extent of the law. Unless otherwise stated the results shown in this test report refer only to the sample(s) tested.

Attention: To check the authenticity of testing / inspection report & certificate, please contact us at telephone: (86-755) 8307 1443, or email: CN.Doccheck@sgs.com

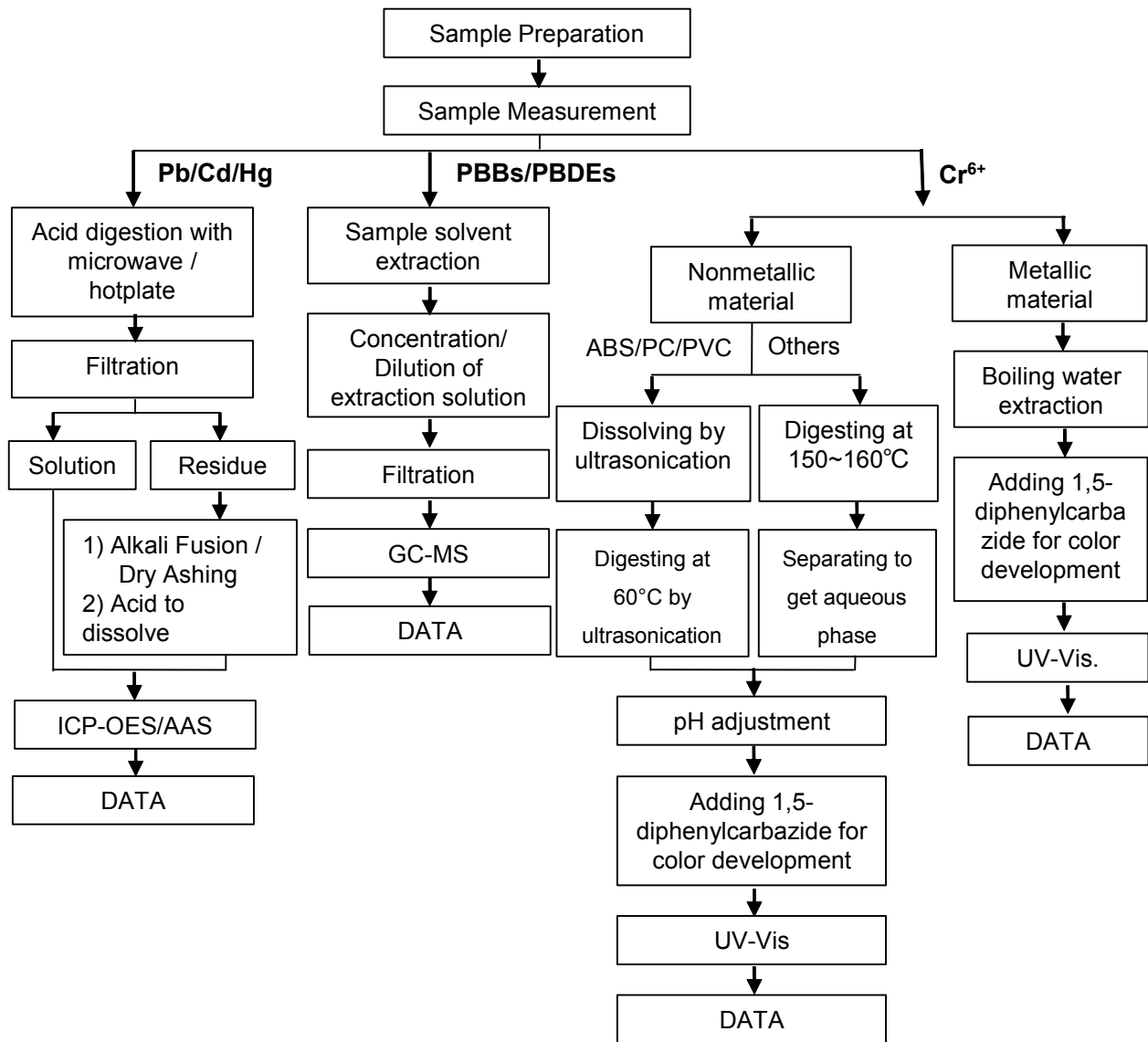
BK18, BK19, BK20, BK21, BK22, BK23, BK24, BK25, BK26, BK27, BK28, BK29, BK30,
BK01N, BK02N, BK03N, BK04N, BK05N, BK06N, BK07N, BK08N, BK09N, BK10N, BK11N, BK12N, BK13N,
BK14N, BK15N, BK16N, BK17N, BK18N, BK19N, BK20N, BK21N, BK22N, BK23N, BK24N, BK25N, BK26N,
BK27N, BK28N, BK29N, BK30N,
BK01M, BK02M, BK03M, BK04M, BK05M, BK06M, BK07M, BK08M, BK09M, BK10M, BK11M, BK12M, BK13M,
BK14M, BK15M, BK16M, BK17M, BK18M, BK19M, BK20M, BK21M, BK22M, BK23M, BK24M, BK25M, BK26M,
BK27M, BK28M, BK29M, BK30M,
BK01MN, BK02MN, BK03MN, BK04MN, BK05MN, BK06MN, BK07MN, BK08MN, BK09MN, BK10MN, BK11MN,
BK12MN, BK13MN, BK14MN, BK15MN, BK16MN, BK17MN, BK18MN, BK19MN, BK20MN, BK21MN, BK22MN,
BK23MN, BK24MN, BK25MN, BK26MN, BK27MN, BK28MN, BK29MN, BK30MN,
SBK07, SBK08, SBK09, SBK10, SBK11, SBK12, SBK13, SBK14, SBK15, SBK16, SBK17, SBK18, SBK19,
SBK20, SBK21, SBK22, SBK23, SBK24, SBK25, SBK26, SBK27, SBK28, SBK29, SBK30,
SBK01N, SBK02N, SBK03N, SBK04N, SBK05N, SBK06N, SBK07N, SBK08N, SBK09N, SBK10N, SBK11N,
SBK12N, SBK13N, SBK14N, SBK15N, SBK16N, SBK17N, SBK18N, SBK19N, SBK20N, SBK21N, SBK22N,
SBK23N, SBK24N, SBK25N, SBK26N, SBK27N, SBK28N, SBK29N, SBK30N,
Y01, Y02, Y03, Y04, Y05, Y01M, Y02M, Y03M, SY11, SY12, SY13, SY14, SY15, SY11M, SY12M, SY13M, Y01N,
Y02N, Y03N, Y04N, Y05N, Y01MN, Y02MN, Y03MN, SY11N, SY12N, SY13N, SY14N, SY15N, SY11MN,
SY12MN, SY13MN,
BL01, BL02, BL03, BL04, BL05, BL01M, BL02M, BL03M, SBL11, SBL12, SBL13, SBL14, SBL15, SBL11M,
SBL12M, SBL13M, BL01N, BL02N, BL03N, BL04N, BL05N, BL01MN, BL02MN, BL03MN, SBL11N, SBL12N,
SBL13N, SBL14N, SBL15N, SBL11MN, SBL12MN, SBL13MN,
R01, R02, R03, R04, R05, R01M, R02M, R03M, SR11, SR12, SR13, SR14, SR15, SR11M, SR12M, SR13M,
R01N, R02N, R03N, R04N, R05N, R01MN, R02MN, R03MN, SR11N, SR12N, SR13N, SR14N, SR15N, SR11MN,
SR12MN, SR13MN,
V01, V02, V03, V04, V05, V06, V07, V08, V09, V11N, V12N, V13N, V14N, V15N, V16N, V17N, V18N, V19N



ATTACHMENTS

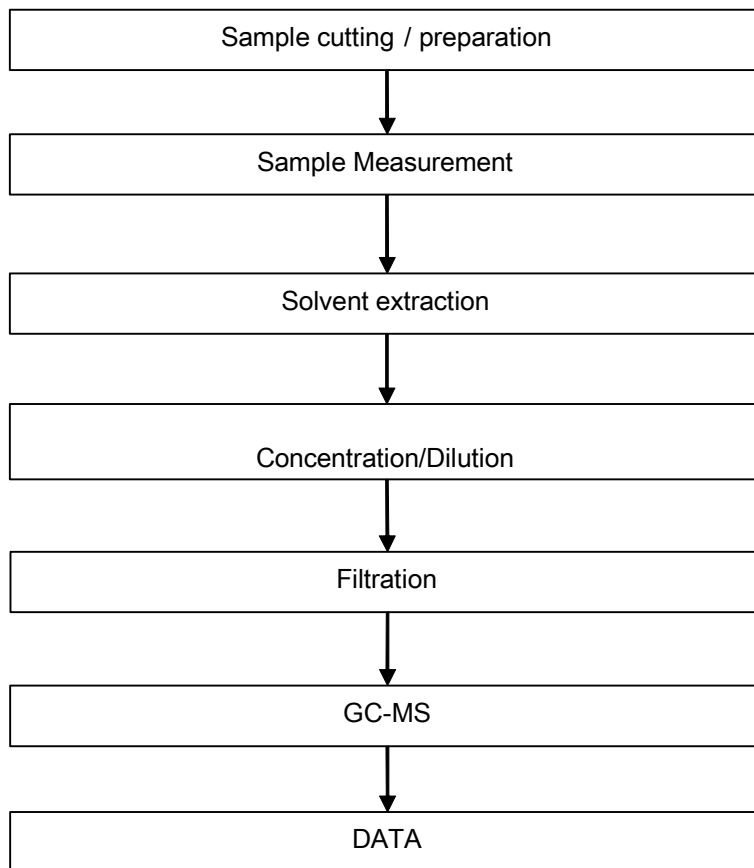
Pb/Cd/Hg/Cr⁶⁺/PBBs/PBDEs Testing Flow Chart

1) These samples were dissolved totally by pre-conditioning method according to below flow chart. (Cr⁶⁺ and PBBs/PBDEs test method excluded).



ATTACHMENTS

Phthalates Testing Flow Chart



Unless otherwise agreed in writing, this document is issued by the Company subject to its General Conditions of Service printed overleaf, available on request or accessible at <http://www.sgs.com/en/Terms-and-Conditions.aspx> and, for electronic format documents, subject to Terms and Conditions for Electronic Documents at <http://www.sgs.com/en/Terms-and-Conditions/Terms-e-Document.aspx>. Attention is drawn to the limitation of liability, indemnification and jurisdiction issues defined therein. Any holder of this document is advised that information contained hereon reflects the Company's findings at the time of its intervention only and within the limits of Client's instructions, if any. The Company's sole responsibility is to its Client and this document does not exonerate parties to a transaction from exercising all their rights and obligations under the transaction documents. This document cannot be reproduced except in full, without prior written approval of the Company. Any unauthorized alteration, forgery or falsification of the content or appearance of this document is unlawful and offenders may be prosecuted to the fullest extent of the law. Unless otherwise stated the results shown in this test report refer only to the sample(s) tested.

Attention: To check the authenticity of testing / inspection report & certificate, please contact us at telephone: (86-755) 8307 1443, or email: CN.Doccheck@sgs.com

Sample photo:



SGS authenticate the photo on original report only

*** End of Report ***

